



**CHANNAHON
PARK DISTRICT**

**Please note these are concept plans and
are for planning purposes only.**

Channahon Park District

CPD BUILD 50

DISTRICT WIDE FACILITIES IMPROVEMENT PLAN

COMMITTEE OF THE WHOLE
17 AUGUST 2020

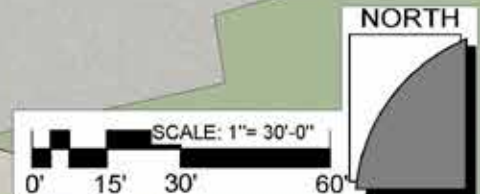
HERITAGE BLUFFS GOLF COURSE



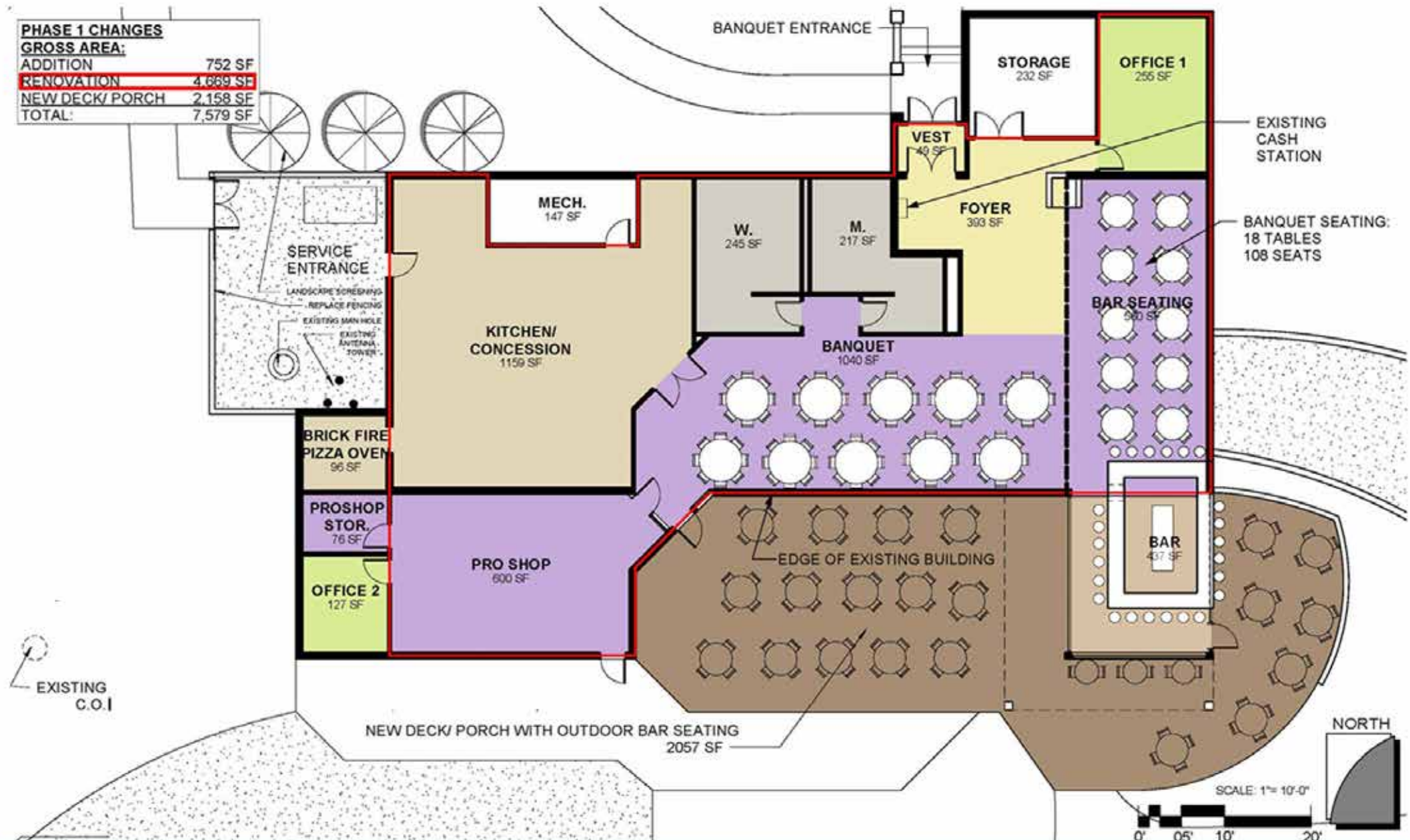
**CHANNAHON
PARK DISTRICT**



PHASE 1 CHANGES	
GROSS AREA:	
ADDITION	752 SF
RENOVATION	4,669 SF
NEW DECK/ PORCH	2,158 SF
TOTAL:	7,579 SF



PHASE 1 CHANGES	
GROSS AREA:	
ADDITION	752 SF
RENOVATION	4,669 SF
NEW DECK/ PORCH	2,158 SF
TOTAL:	7,579 SF







INDOOR DINING AND BAR SEATING



OPERABLE GLASS PARTITION IN BANQUET ROOM



PATIO SEATING & DINING



STAMPED AND COLORED CONCRETE



INDOOR/ OUTDOOR BAR WITH OPERABLE DOORS



EXTERIOR VIGNETTE AT BAR

HERITAGE BLUFFS GOLF COURSE

TYPE OF COST	AMOUNT
HARD COST	\$ 2,096,800
SOFT COST	\$ 346,000
TOTAL PROJECT COST	\$ 2,442,800



**CHANNAHON
PARK DISTRICT**

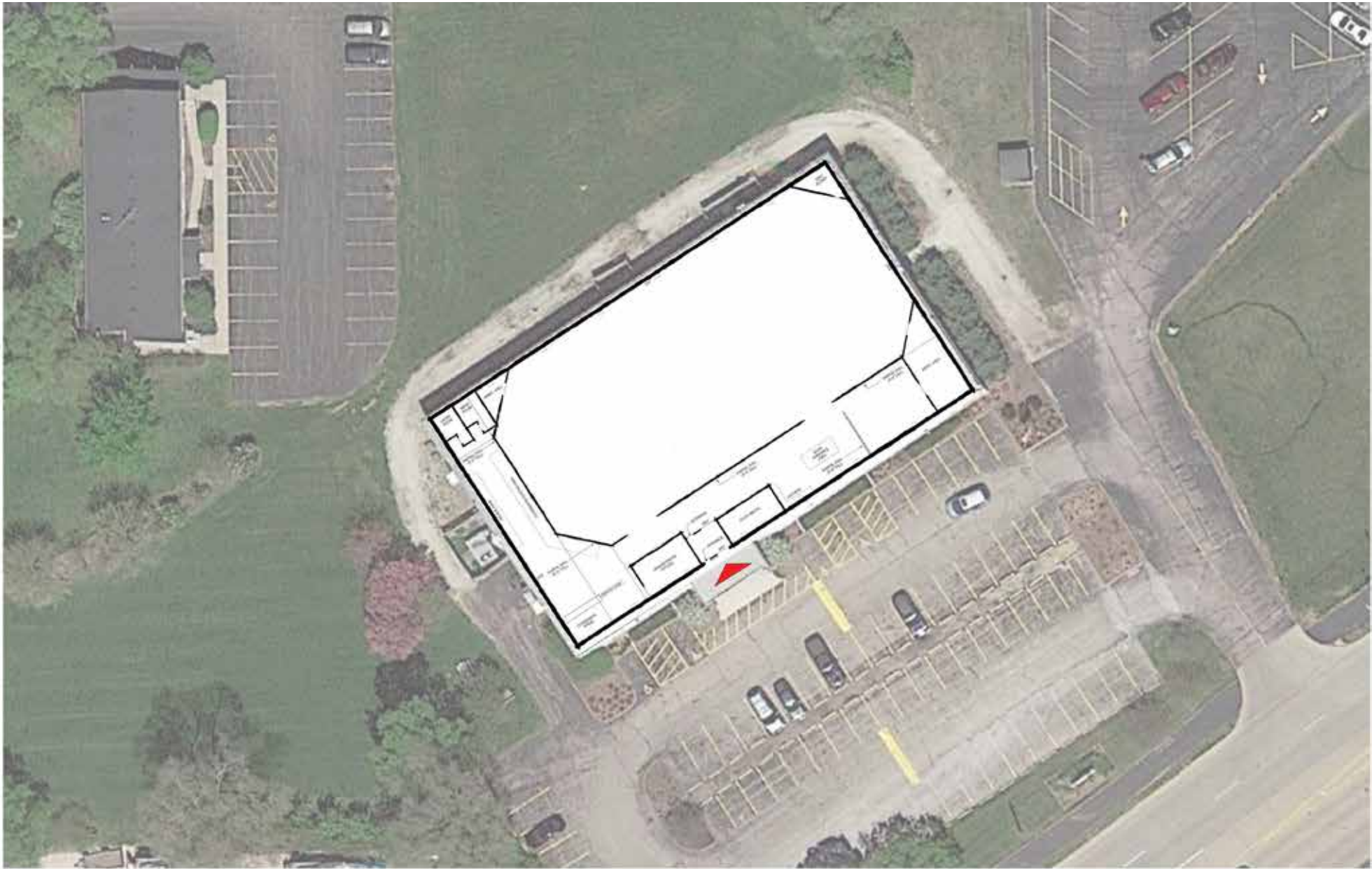
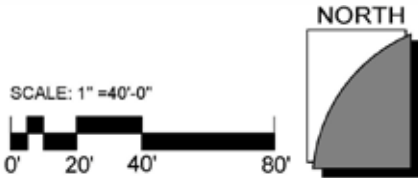


PROGRAM :

ROLLER RINK WOOD FLOOR
ROLLER DERBY – NEW STYLE ON
FLAT TRACK
NEW DJ BOOTH
BAR/CONCESSION STAND
ALSO STRIPE THE CENTER WOOD
FLOOR FOR SHUFFLE BOARD
NEW FINISHES THROUGHOUT FOR
AN UPDATED INTERIOR:
REMOVE DROPPED CEILING/
EXPOSE AND UPDATE
REMOVE CARPET OFF SKATING WALLS
RESTROOM REFURNISH/UPGRADES/
OLYMPIC SIZED ROLLER RINK
25' X 60' ± 1,500 SF

GROSS RENOVATION AREA:
17,225 SF

PARKING LOT RESURFACE:
22,045 SF



EXISTING SITE/FLOOR PLAN

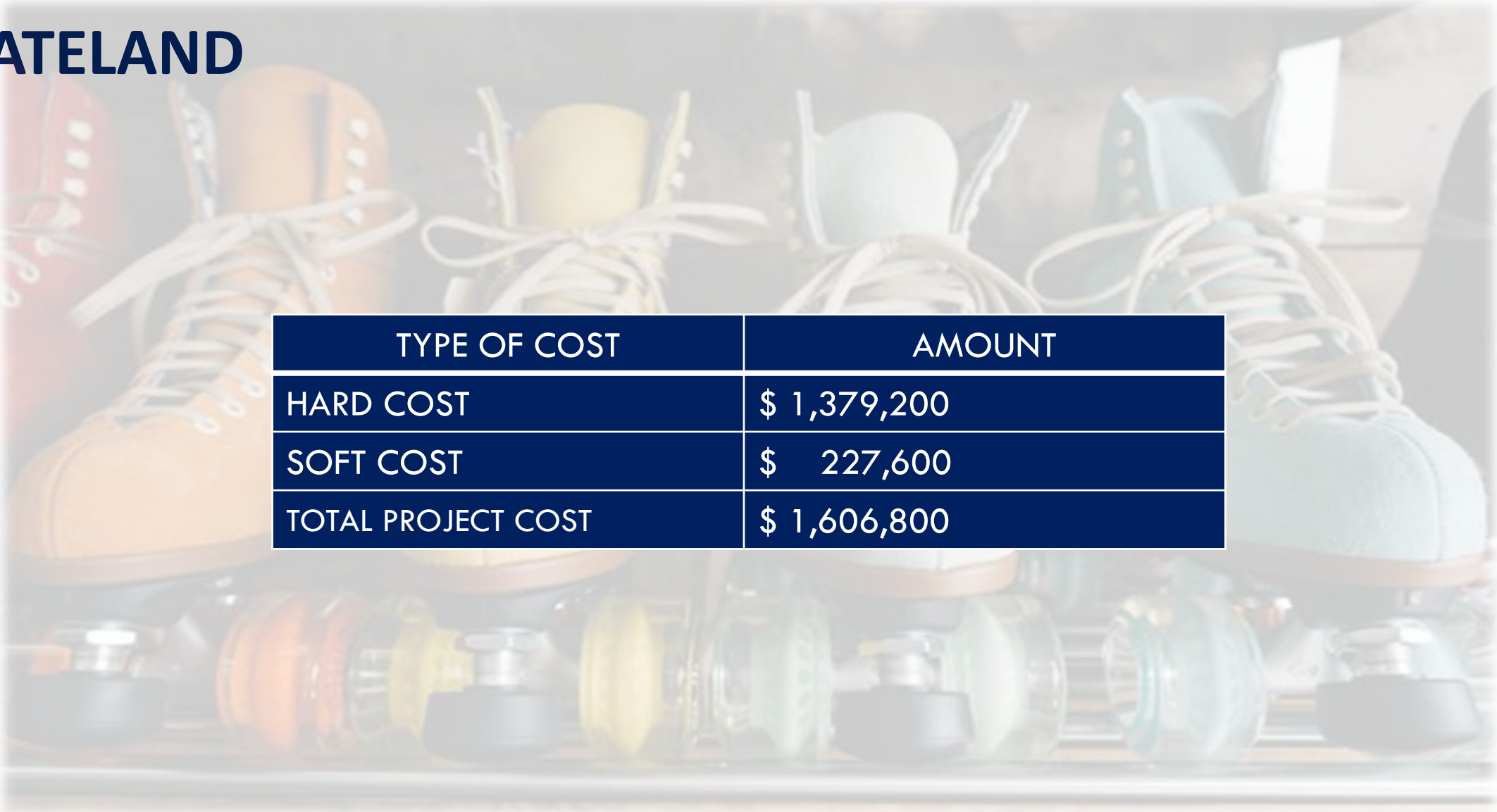


EXISTING CONDITIONS



CONCEPTUAL MOOD BOARD

SKATELAND



TYPE OF COST	AMOUNT
HARD COST	\$ 1,379,200
SOFT COST	\$ 227,600
TOTAL PROJECT COST	\$ 1,606,800



TOMAHAWK AQUATIC CENTER



**CHANNAHON
PARK DISTRICT**





MASTER PLAN

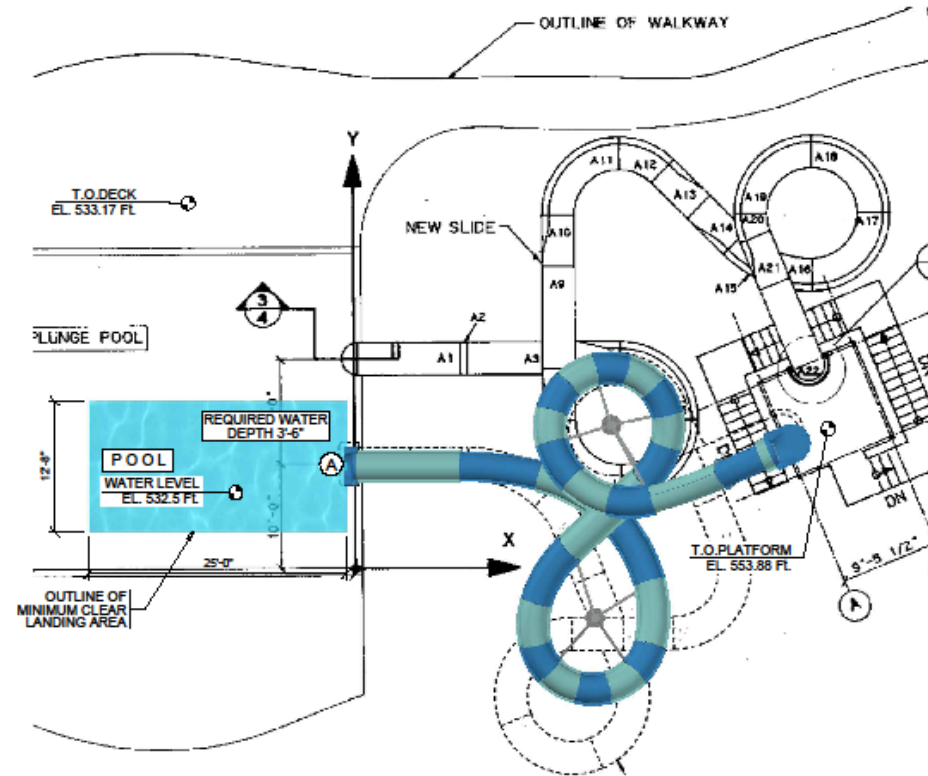




SHADE

Channahon Slide Channahon, Illinois, United States

	LENGTH	HEIGHT	VEHICLE
A	AquaTube	132.8	21.4
			Body Slide

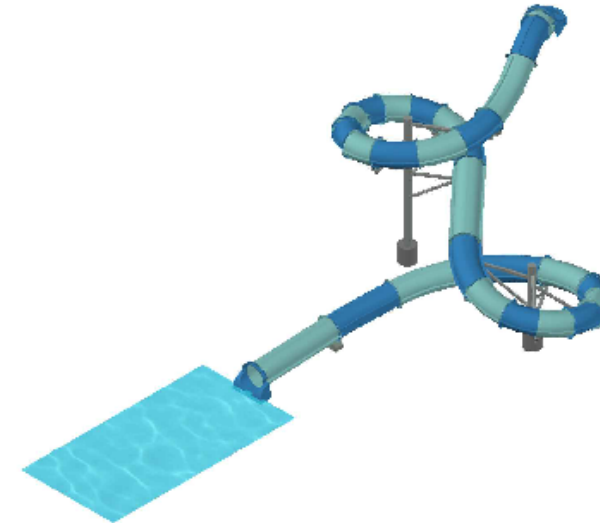


1 Plan View

2 Elevation View



3 Isometric View



44203 SK-10

This document is copyright and the proprietary information herein are the sole property of WhiteWater West Industries Ltd. and may not be reproduced or distributed without prior consent of WhiteWater West Industries Ltd. The proposal layout shown is a concept only and may be subject to change.

Model: 44203A2
Date: Jun 24, 2020
Designer: F.R.

Drafter: A.H.
Scale: 1"=12'-0"
Page: 1 OF 1

SCALE 1"=12'-0"
0 12 24 FEET



WHITEWATER
BY: WWO

NEW FLUME SLIDE



WATER FEATURES PLAN – WITH AQUATIC STRUCTURES

Play Value Planning

Aquatic play may feel spontaneous, but it actually requires lots of planning. We design every play experience to keep families engaged, boost dwell times, and increase return visits.

To build lasting memories among moms, dads, and little ones of all abilities, we carefully consider how to integrate products that cater to everything from the location's footprint and capacity to its demographics and theming objectives.



Sensory
Stimulates & develops multiple sense experiences



Spray
Encourages teamwork & competition



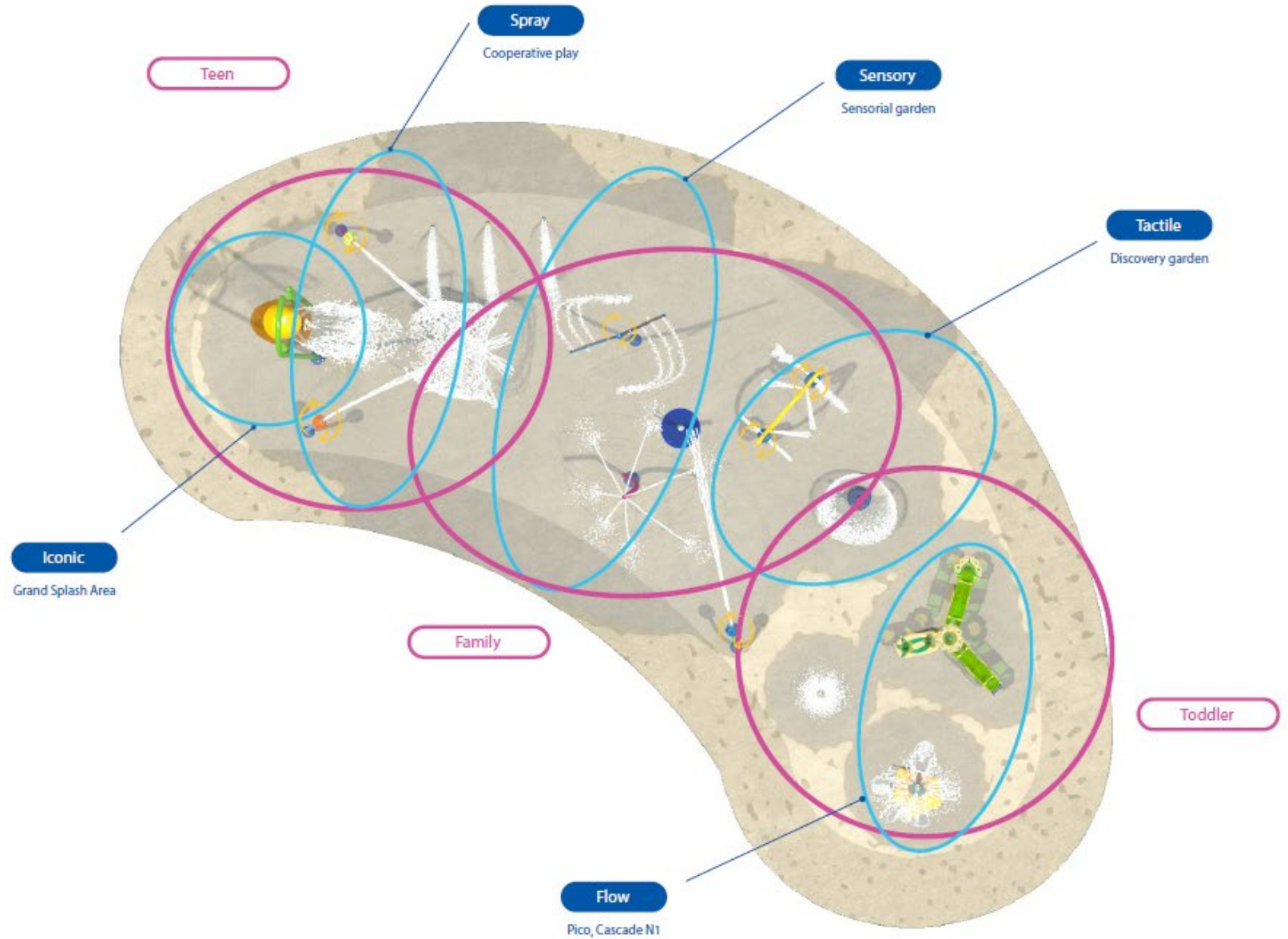
Tactile
Promotes discovery of water textures



Iconic
Features interactive fun & serves as a social gathering place



Flow
Develops discovery & learning





SPLASH PAD



SPLASH PAD



SPRAY PLAY FEATURES



PLAYNUK N°3

SPECIFICATIONS

UNIT SIZE (L/W/H)	23'-11" x 19'-7" x 10'-3½" 7.3M x 6M x 3.1M
MIN. REQUIRED FOOTPRINT	1375 SQ.FT. / 127 SQ.M.
TOTAL ELEVATED AREA (including platforms, links and stairs)	59.9 SQ.FT. / 5.56 SQ.M.
TOP DECK HEIGHT	3 FT. / 0.91 M
USER CAPACITY (on and around structure)	UP TO 45 USERS
TOTAL WATER FLOW	148 GPM / 560 LPM
TYPE OF APPLICATION	ZERO-DEPTH SPLASHPAD*

TOP VIEW





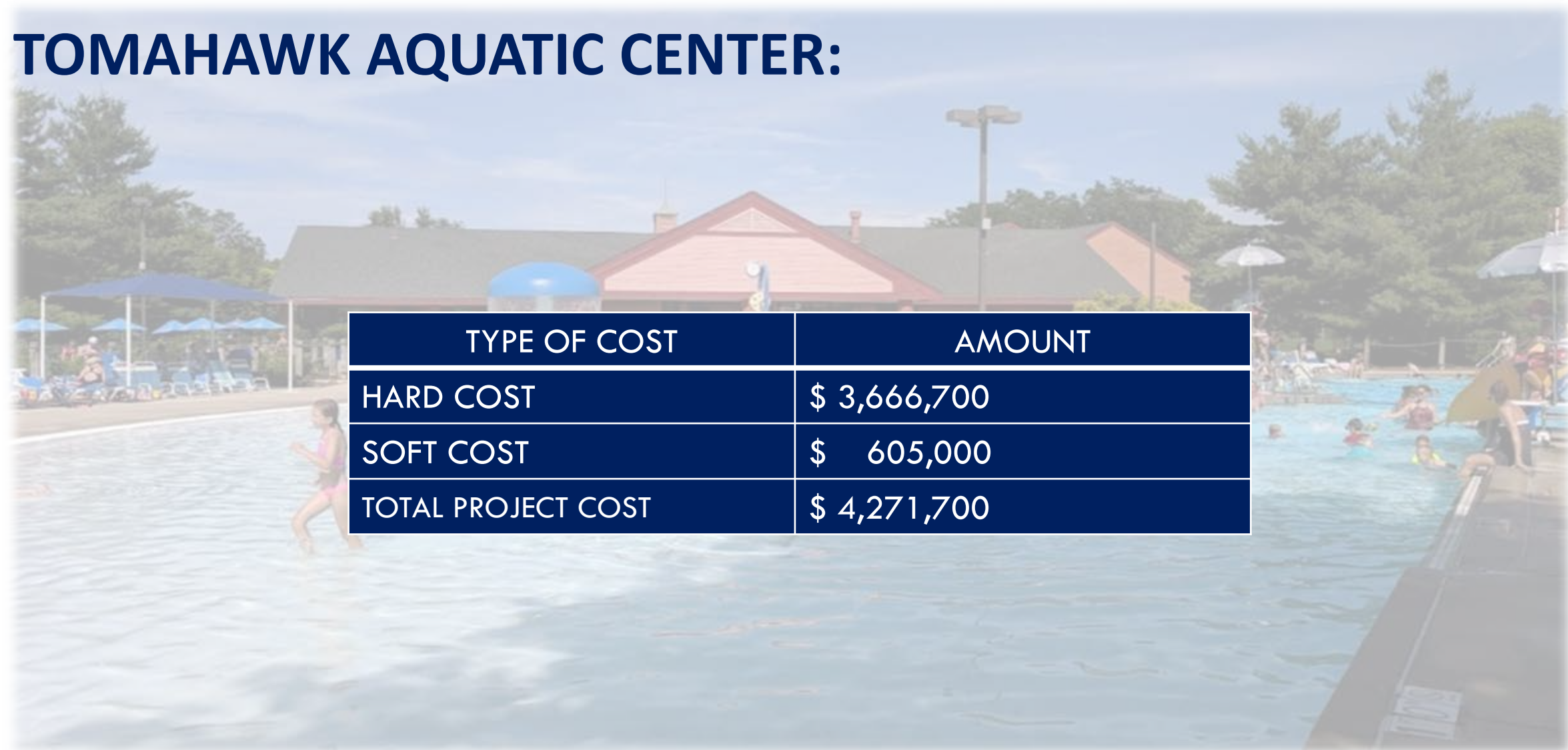
PLAYNUK Nº3

ZERO ENTRY WATER ACTIVITY FEATURE



SOFFIT

TOMAHAWK AQUATIC CENTER:

The background image shows an outdoor swimming pool at the Tomahawk Aquatic Center. In the foreground, a young girl in a pink swimsuit is wading in the water. To the left, there are blue lounge chairs and umbrellas. In the background, a large building with a red roof and a blue dome is visible, surrounded by trees. The sky is blue with some clouds.

TYPE OF COST	AMOUNT
HARD COST	\$ 3,666,700
SOFT COST	\$ 605,000
TOTAL PROJECT COST	\$ 4,271,700

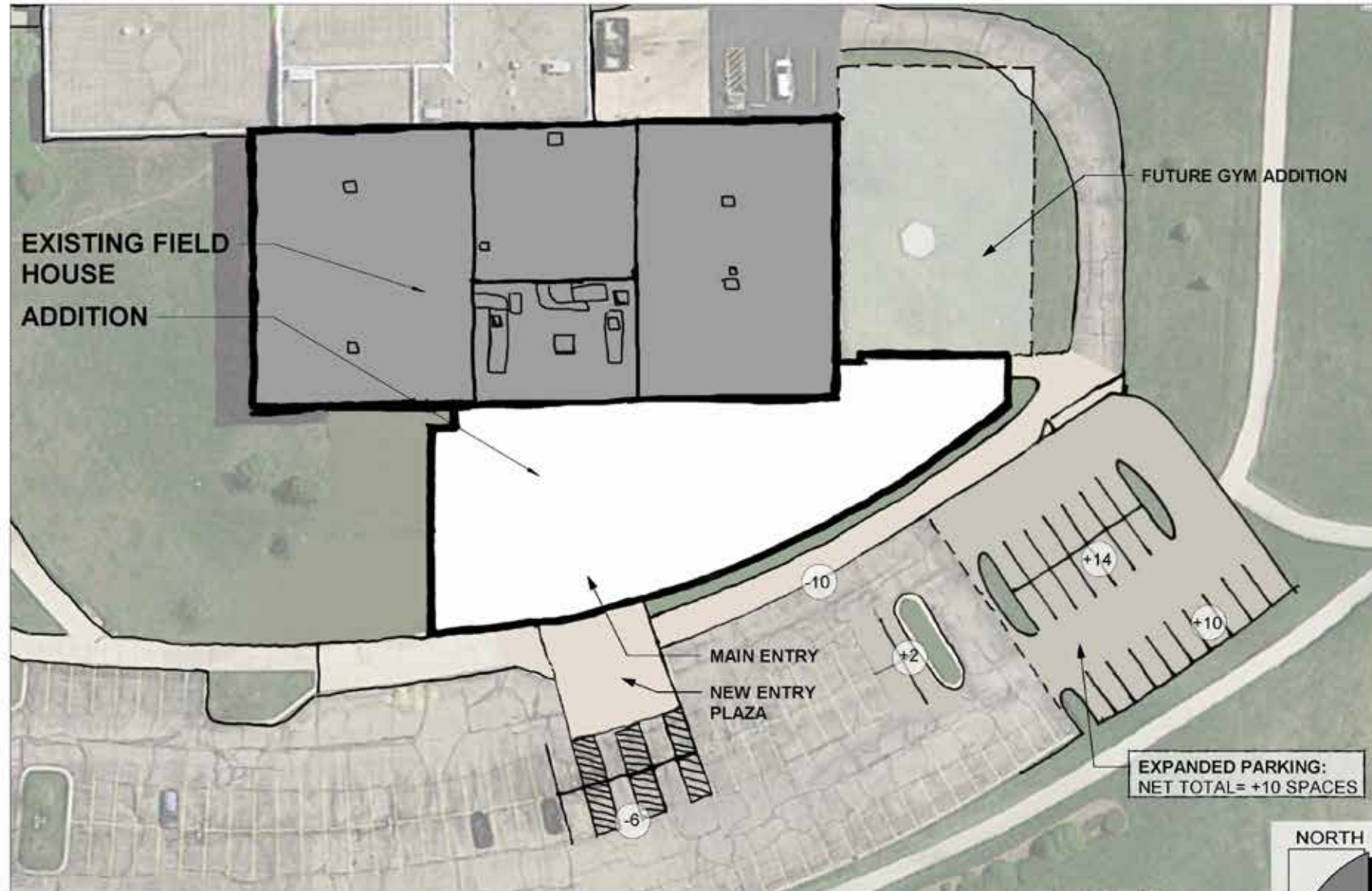


HERITAGE CROSSING FIELD HOUSE



**CHANNAHON
PARK DISTRICT**





SITE PLAN

GROSS AREA:	
RENOVATION	6,500 SF
ADDITION	15,025 SF
TOTAL:	21,525 SF

PARKING:	
ADDITIONAL PAVING:	9,975 SF
RESEAL EXISTING:	42,640 SF
RESEAL DRIVE	8,460 SF

PROGRAM:

GENERAL PROGRAM:

MULTI-USE 1	1,000 SF
MULTI-USE 2	1,000 SF
MULTI-USE STORAGE	200 SF
MULTI-USE AV STORAGE	80 SF
PROGRAM ESPORTS	0 SF
ESPORT STORAGE	0 SF
KITCHEN:WARMING/ CATERING/CONCESSIONS	500 SF
DEMONSTRATION KITCHEN	200 SF
DRY STORAGE KITCHEN	100 SF
CAFÉ SEATING	200 SF
NET SF TOTAL	2,280 SF
NET TO GROSS 17%	2,670 SF

FIELDHOUSE – FACILITY ADMINISTRATION

CONTROL	100 SF
SUPT. OF RECREATION FACILITIES (INCL. SMALL CONF. TABLE FOR 4)	200 SF
FACILITY MANAGER	120 SF
ATHLETIC SUPERVISOR	120 SF
FITNESS SUPERVISOR (IN FITNESS) 0 SF	
RECREATION COORDINATOR (SHARED FOR 2)	120 SF
CONFERENCE ROOM	200 SF
KITCHEN/STAFF BREAK ROOM	120 SF
STORAGE	80 SF
NET SF TOTAL	1,000 SF
NET TO GROSS 20%	1,200 SF

FIELD HOUSE FITNESS

FITNESS EXERCISE	8,000 – 9,000 SF
48% CARDIO	3,840 – 4,320 SF
32% RESISTIVE	2,560 – 2,880 SF
20% FREE WEIGHTS	1,600 – 1,800 SF

HEALTH FITNESS CHECK IN	100 SF
M&W EXPRESS LOCKERS	100 SF
FITNESS ASSESSMENT	
OFFICE/HEALTH SCREENING	100 SF
FITNESS OFFICE – MANAGER	120 SF
LAUNDRY	0 SF
NET SF TOTAL	8,400 – 9,400 NET SF
NET TO GROSS 12%	9,400 – 10,530 SF

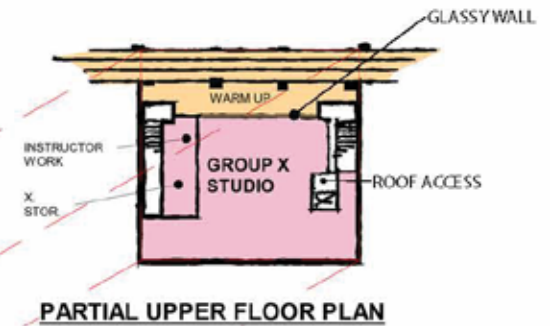
FIELDHOUSE – GROUP X (EXISTING UPPER LEVEL)

GROUP X STUDIO	1,000 * - 1,200 SF
INSTRUCTOR WORKROOM	150 SF
GROUP X CUEING	300 SF
GROUP X EXPRESS LOCKERS 50 SF	
GROUP X STORAGE	120 SF
NET SF TOTAL	1,520 SF NET SF

2ND FLOOR RESTROOMS	
MEN (1WC, 1 LAV) 80	
WOMEN (1 WC, 1 LAV) 80	

NET SF TOTAL – EXISTING SF	1,800 – 2,000 SF
	1,720 * - 1,920 SF

GROSS AREA:	
RENOVATION	6,500 SF
ADDITION	15,025 SF
TOTAL:	21,525 SF





MAIN ENTRY



FITNESS



FITNESS



GROUP X-ercise



MULTI-PURPOSE ROOM



MULTI-PURPOSE ROOM KITCHEN

HERITAGE CROSSING FIELD HOUSE



TYPE OF COST	AMOUNT
HARD COST	\$ 8,597,100
SOFT COST	\$ 1,289,600
TOTAL PROJECT COST	\$ 9,886,700



ARROYO TRAILS ADMINISTRATION



**CHANNAHON
PARK DISTRICT**

Est. 1971



PROGRAM:

ARROYO TRAILS – COMMON AREAS/ADMINISTRATION

GATHERING SPACE / VIEWING (30-40)	1,000 SF
CHECK-IN	100 SF
CENTER MANAGER	120 SF
ASSISTANT CENTER MANAGER	0 SF
OPEN OFFICE (2)	120 SF
VOLUNTEER WORK AREA (1-2)	120 SF
STAFF / BREAK / LUNCH	
/ CONFERENCE (8010) 8X18/SF	150 SF
OFFICE STORAGE OF FILES	150 SF
STAFF MEN'S RESTROOM	80 SF
STAFF WOMEN'S RESTROOM	80 SF
STAFF LOCKERS	0 SF
STAFF SHOWER	0 SF
WASHER/DRYER	0 SF
NET SF	1,920 SF
NET TO GROSS SF (18%)	2,260 SF

ARROYO TRAILS FUTURE PROGRAM

EXHIBIT AREA	1,000 SF
CHILDREN'S AREA	200 SF
MULTI-PURPOSE AREA (25 PEOPLE)	500 SF
ASSISTANT CENTER MANAGER	0 SF
TABLE & CHAIR STORAGE	
/ AV STORAGE	150 SF
LAB/EXHIBIT PREP	120 SF
SMALL GROUP PROGRAM	
(10 PEOPLE)	200 SF
PROGRAM STORAGE /	
MULTI-PURPOSE KITCHENETTE	50 SF
NET SF	2,220 SF
NET TO GROSS SF (16%)	2,580 SF

CENTRAL ADMIN

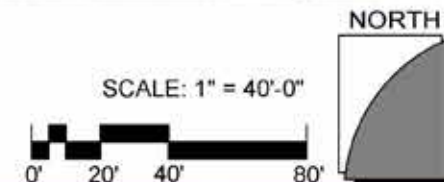
CHECK IN	100 SF
EXECUTIVE DIRECTOR (INCL. SMALL	
CONFERENCE TABLE FOR 4)	200 SF
SUPT. FINANCE & HR (INCL.	
SMALL CONF. TABLE FOR 4)	200 SF
IT MANAGER	100 SF
1 SHARED OFFICE (FOR 2)	120 SF
CONFERENCE ROOM (SEATING 8)	120 SF
1 BOARD ROOM	400 SF
AV STORAGE	100 SF
BOARD ROOM STORAGE	120 SF
BREAK ROOM (SHARE W/	
FACILITY ADMIN)	0 SF
CENTRAL ADMIN STORAGE	80 SF
NET SF TOTAL	1,540 SF
NET TO GROSS 18%	1,820 SF



SITE PLAN

APPROX. GROSS AREA INCLUDING GARAGES:

RENOVATION:	4,700 SF
ADDITION	85 SF
FUTURE PROGRAMING	3,000 SF
TOTAL:	7,785 SF






MEETING ROOM



CONTROL / ADMIN SPACE

ARROYO TRAILS ADMINISTRATION



TYPE OF COST	AMOUNT
HARD COST	\$ 592,900
SOFT COST	\$ 109,600
TOTAL PROJECT COST	\$ 702,500

THANK YOU



**CHANNAHON
PARK DISTRICT**

Est. 1971

Creating diverse opportunities and experiences that enhance quality of life